

TO THE PARTICIPANTS OF NAMMCO 25, HELD IN NUUK, GREENLAND



25 Years, 1992 – 2017

NUUK GUIDE

The routes are based from the Nuuk Center

NUUK CENTER



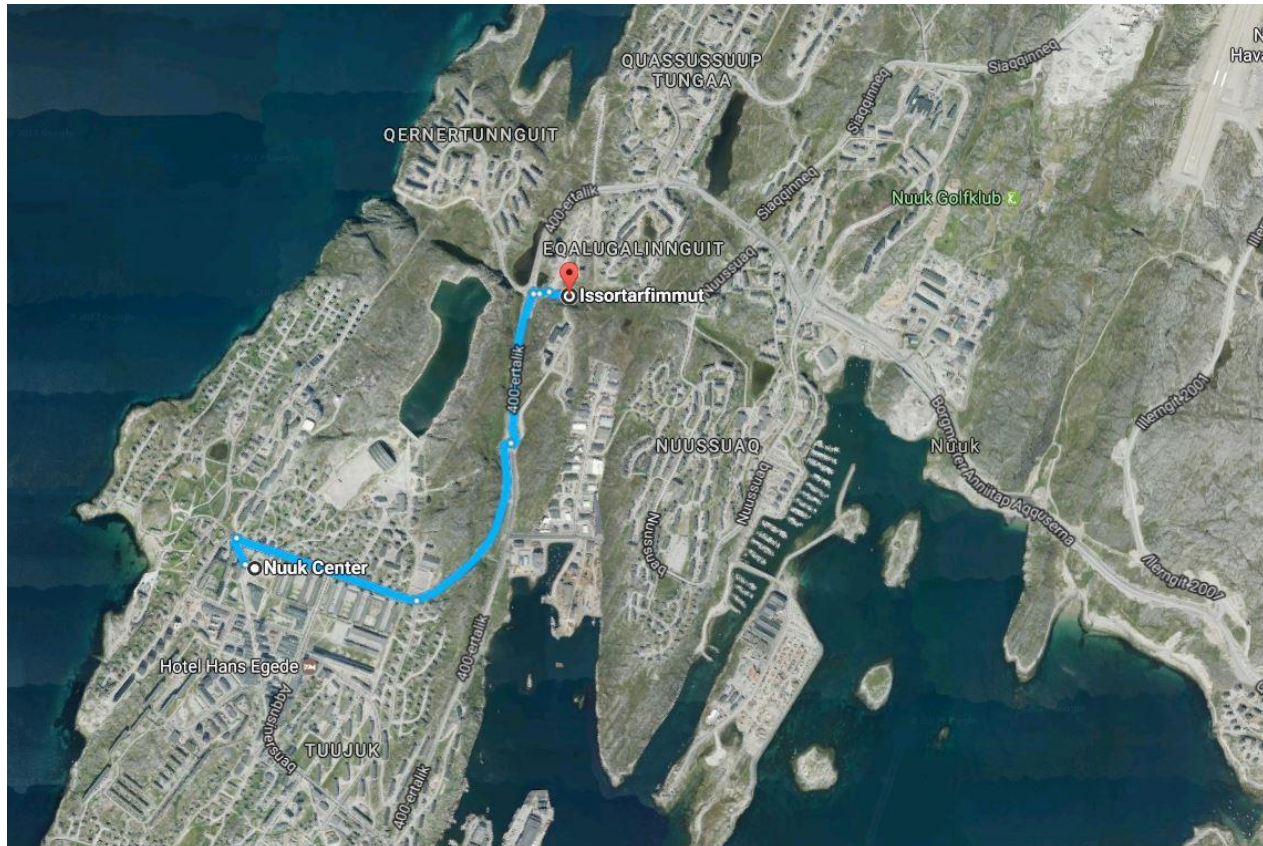
Nuuk Center houses a shopping mall and the Government of Greenland administration offices.

Shops: <http://www.nuukcenter.gl/butikker.aspx>

SKIING:

Cross country skiing: NSP (Nuummi Sisorartartut Peqatigiit)

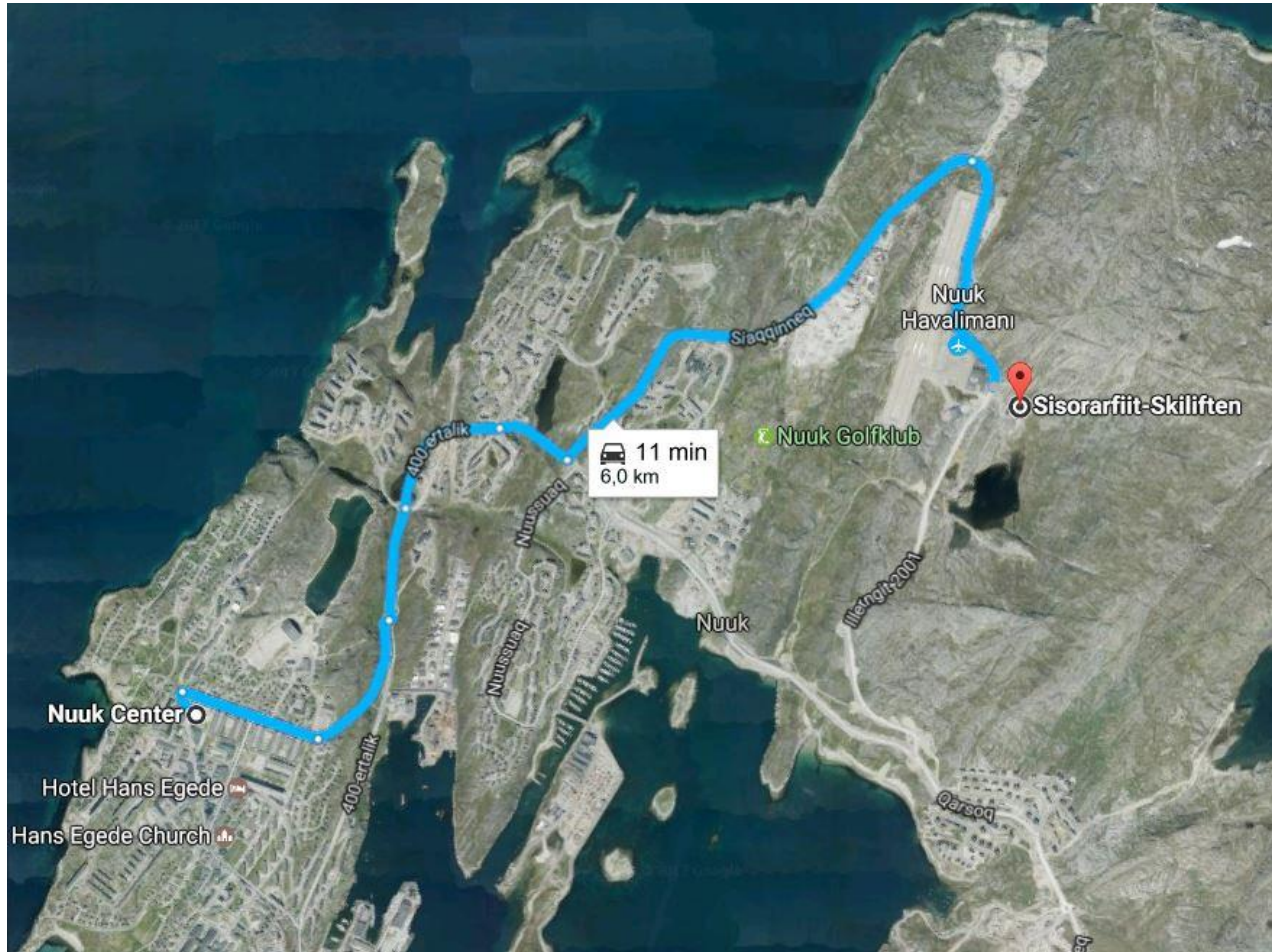
Website: <http://nsp.gl/>



A red building located near a roundabout.

Alpine skiing: Sisorarfiit

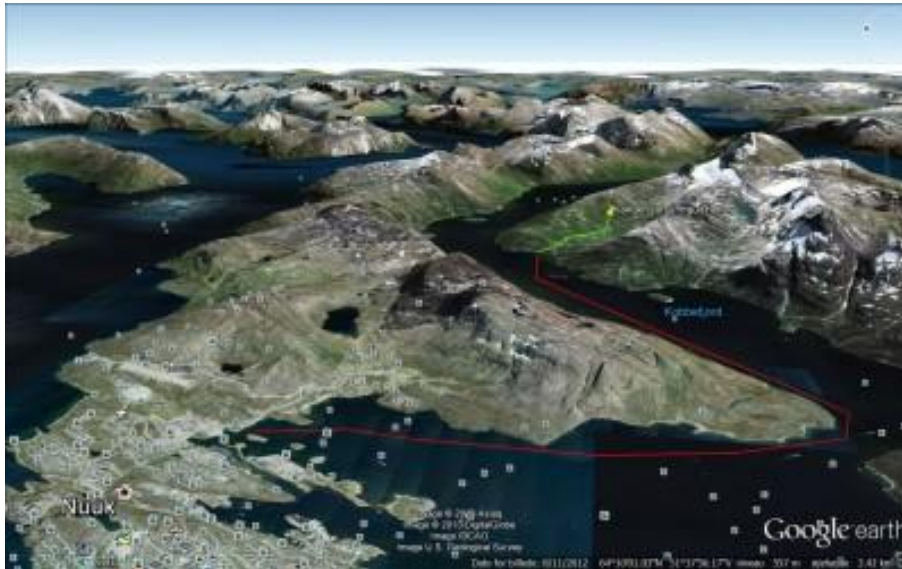
Website: <http://www.skilift.gl/index.php/en/>



Located beside the Nuuk airport.

Heliskiing: Kangerluarsunnguaq Ski Center

Website: <http://www.kangskicenter.com/da/>



Located outside of Nuuk, only accessible by sailboat. It's about 1-hour sailing away. Kangerluarsunnguaq Ski Center has huts in the area, where you have possibility to stay overnight in beautiful snowy landscape, or just a days' stay.

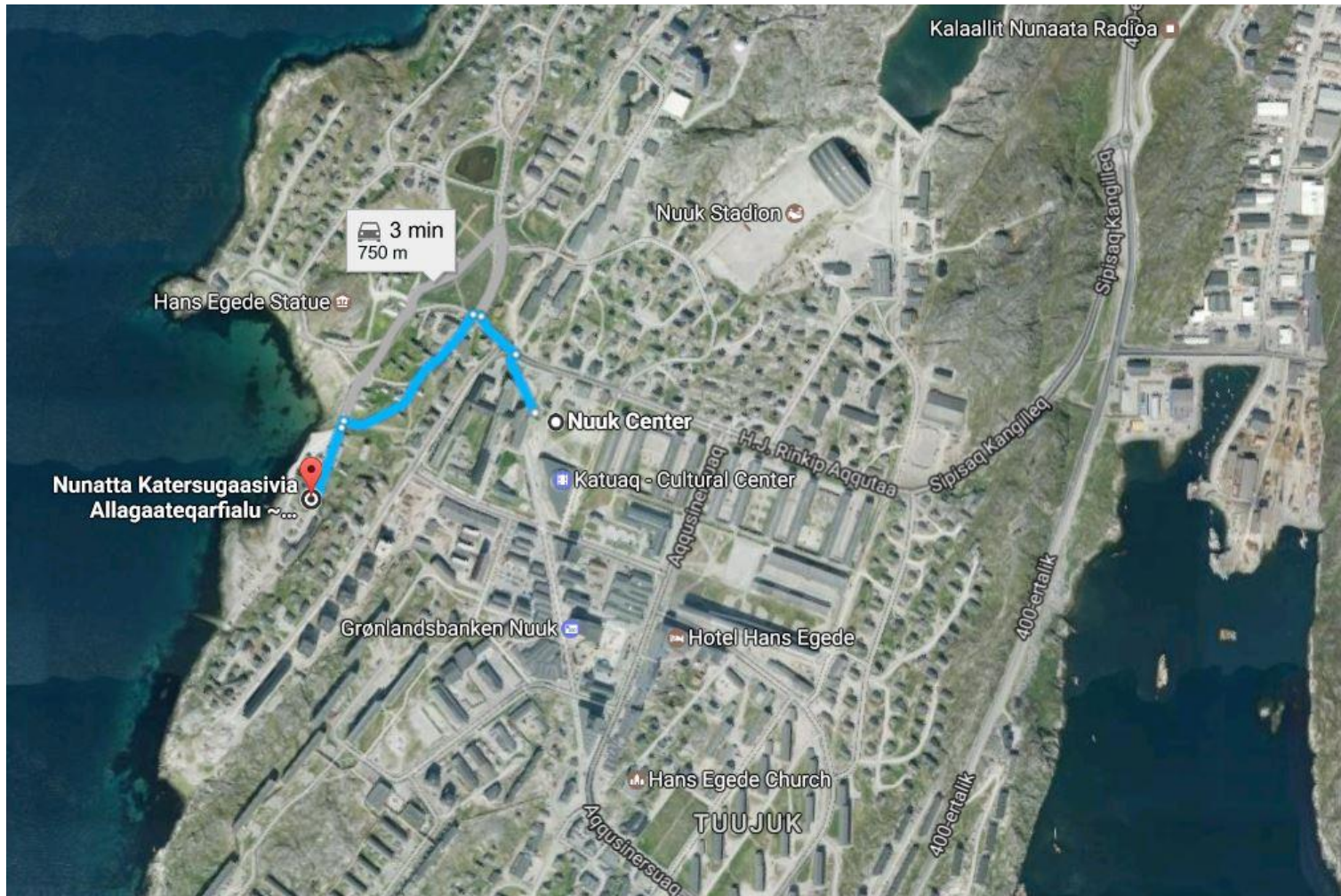
Snowboarding

Snowmobile

Heliskiing

National Museum and Archive of Greenland

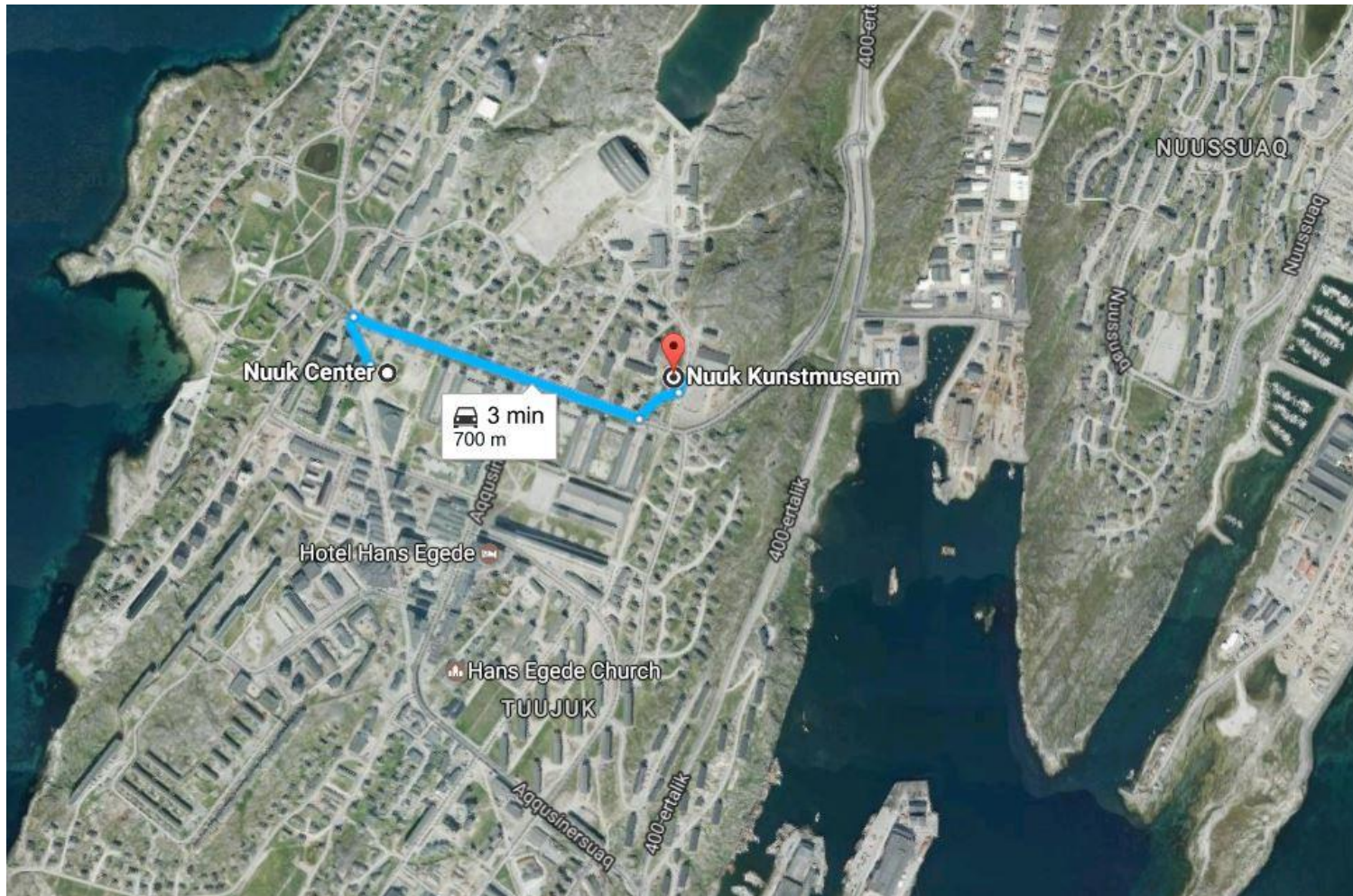
Website: <http://en.nka.gl/>



Located down the street from the statue of Hans Egede. Opening hours are available in the website.

Nuuk Art Museum

Website: <http://www.nuukkunstmuseum.com/en/frontpage/>



A green building, located near the Sports hall, a large blue building. Opening hours are available in the website.

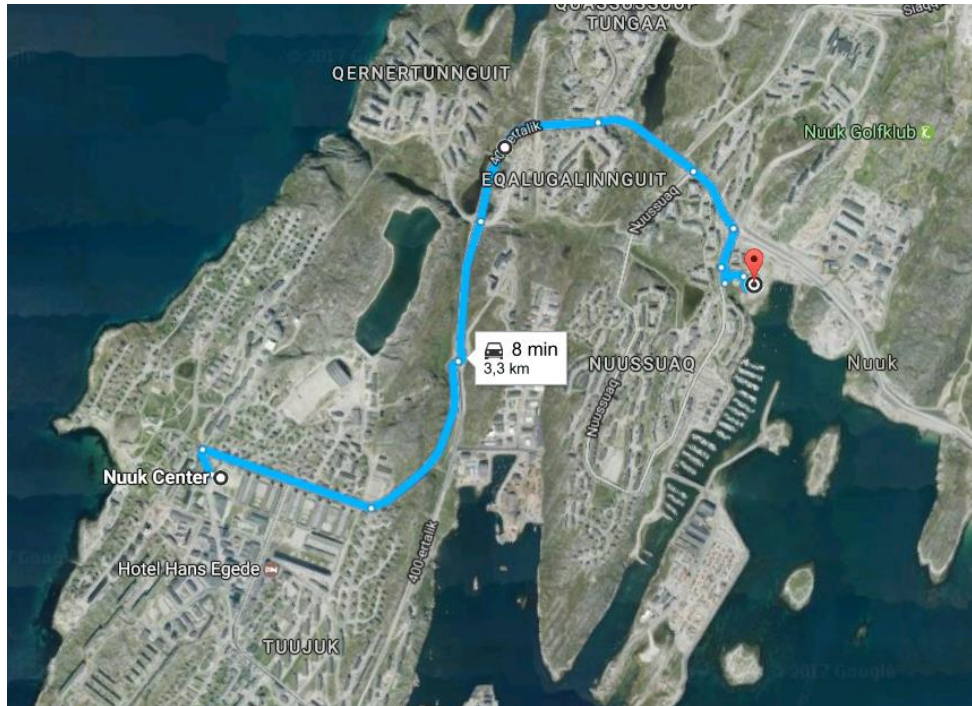
Greenland Cultural Centre: Katuaq

Website: <http://katuaq.gl/en/>



Located right next to the Nuuk Center. Arts, cinema and cafe with possibility to eat hot and cold dishes.

Swimming pool: <http://www.malik-nuuk.gl/>



Sightseeing:

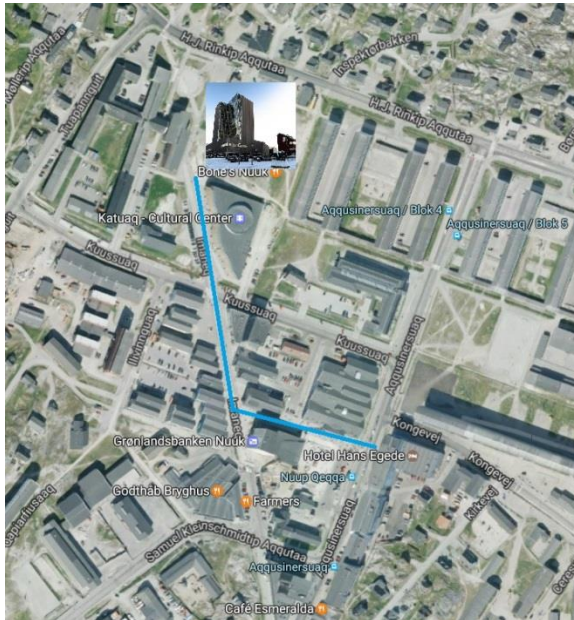
Tupilak travel: <https://tupilaktravel.com/>

Greenland.com: <http://www.greenland.com/>

Snowmobile, Hiking, Ice cap helicopter, National Costume & Kaffemik, City sightseeing, Boat tour, Safari etc.

Souvenir stores:

Along this route, there is various souvenir shops and Greenlandic Design shops



- Anori Art
- Tupilak
- Nuuk Couture, 3900 Great Greenland sealskin products and clothing with greenlandic motives
- Inuit Quality Clothing: Inuit Design of jackets, t-shirts, caps etc.
- Søster og Bror: Isaksen Design
- Dooit Design
- Greenlandic music store:
<http://www.atlanticmusic.gl/>
Across the street from Nuuk Center.

Cash withdrawal:

Grønlandsbanken, Post Office, Brugsen or ATM in Nuuk Center.

USEFUL TELEPHONE NUMBERS

Police department: +299 70 14 48

Hospital: +299 34 44 00

Urgent/Ambulance: +299 34 41 12

Fire department: +299 113

Hotel

Hotel Hans Egede: +299 32 42 22

Website: www.hhe.gl

Transport

Bus: Nuup Bussii

Website, route and timetable: <http://bus.gl/da/koereplaner/>

Taxi:

Taxi 1: +299 36 36 36

Taxi 2: +299 321 321

Restaurants:

Place	Location	Contact	
A Hereford Beefstouw	Hotel Hans Egede	+299 32 42 22	Restaurant
Sarfalik	Hotel Hans Egede	+299 32 42 22	Greenlandic gourmet
Katuaq - Cafetuaq	Katuaq	+299 36 37 79.	Restaurant / Café
Esmeralda	Next to Hotel Hans Egede	+299 32 90 95	Restaurant
Charoen Porn	Next to Hotel Hans Egede	+299 32 57 59	Restaurant
Bone's	Nuuk Center	+299 34 85 04	Restaurant / Take away
Bryggen	Next to Grønlandsbanken	+299 34 80 80	Restaurant
Cafe Iggu	Sipisaq Avannarleq 10	+299 32 95 55	Pizza / Take away
Café Pascucci	Nuuk Center	+299 32 60 65	Café / restaurant

Pubs:

Skyline (Hotel Hans Egede)

Daddy's

Manhattan

Bryggen

Information on flight connections

Air Greenland:

Customer service: +299 70 12 12

Website: <https://www.airgreenland.com>

Other travel agencies:

Vejle Rejser

Customer service: +299 32 28 99

www.vejle-rejser.dk

Greenland Travel Agency

Customer service: +299 70 11 07

www.greenland-travel.dk

Weather forecast: Danish Meteorological Institute

<http://www.dmi.dk/groenland/vejret/byvejrb/by/vis/GL/4250/Nuuk,%20Grønland/>