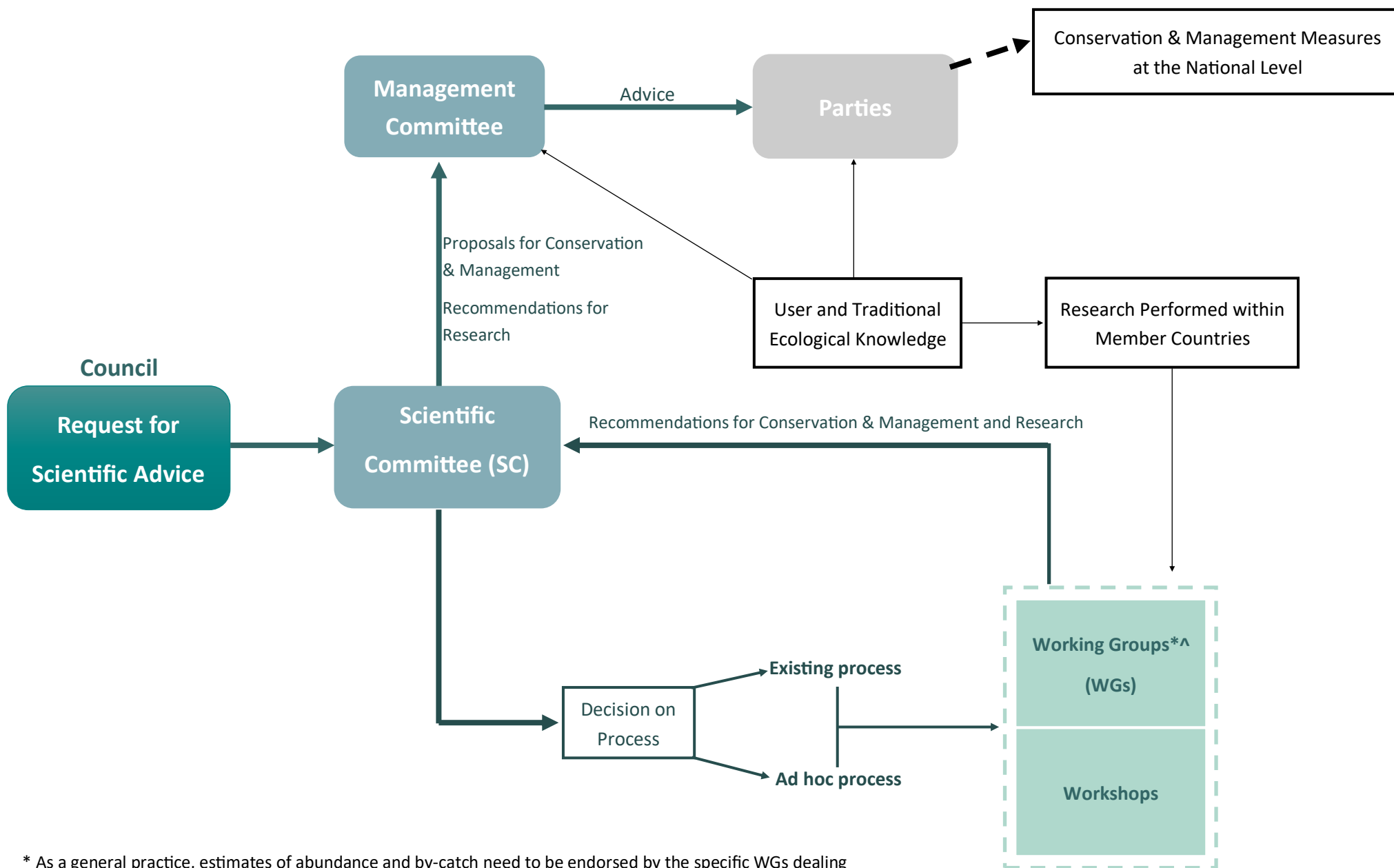


ADVISORY PROCESS OF THE NAMMCO SCIENTIFIC COMMITTEE



* As a general practice, estimates of abundance and by-catch need to be endorsed by the specific WGs dealing with these issues and by the NAMMCO SC before they are used in any NAMMCO assessment.

^ To enhance transparency and openness, external experts shall participate in all WGs meetings